

SITE LOCATION MAP
NTS

GENERAL NOTES

1. SURVEY INFORMATION WAS PROVIDED BY MILLARD, McKAY & DULLES LAND SURVEYORS LLP DATED 02-09-11. C&S ENGINEERS, INC. ASSUMES NO RESPONSIBILITY FOR ITS ACCURACY.
2. CONTRACTOR TO VERIFY ALL FIELD CONDITIONS AND UTILITY LOCATIONS PRIOR TO THE START OF CONSTRUCTION. CONTACT THE ENGINEER WITH ANY DISCREPANCIES FOUND IN THE FIELD.
3. ALL DIMENSIONS FROM PROPERTY LINES ARE 90° FROM PROPERTY LINE UNLESS OTHERWISE NOTED.
4. ALL DIMENSIONS ARE FROM FACE OF CURB UNLESS OTHERWISE NOTED.
5. COORDINATE EXACT LOCATION OF SIDEWALKS AT DOORWAYS WITH ARCHITECTURAL PLANS.

PROPOSED LEGEND

- PROPERTY LINE
- PROPOSED SIGN
- ▭ PROPOSED CONCRETE PAVEMENT / SIDEWALK
- ▭ PROPOSED CONCRETE CURB
- NUMBER OF PARKING SPACES
- ▲ DOOR LOCATION
- E.P. EDGE OF PAVEMENT
- ⊠ LIGHTING FIXTURES

NOTE LEGEND

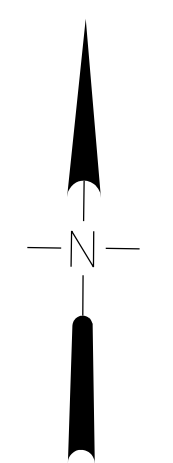
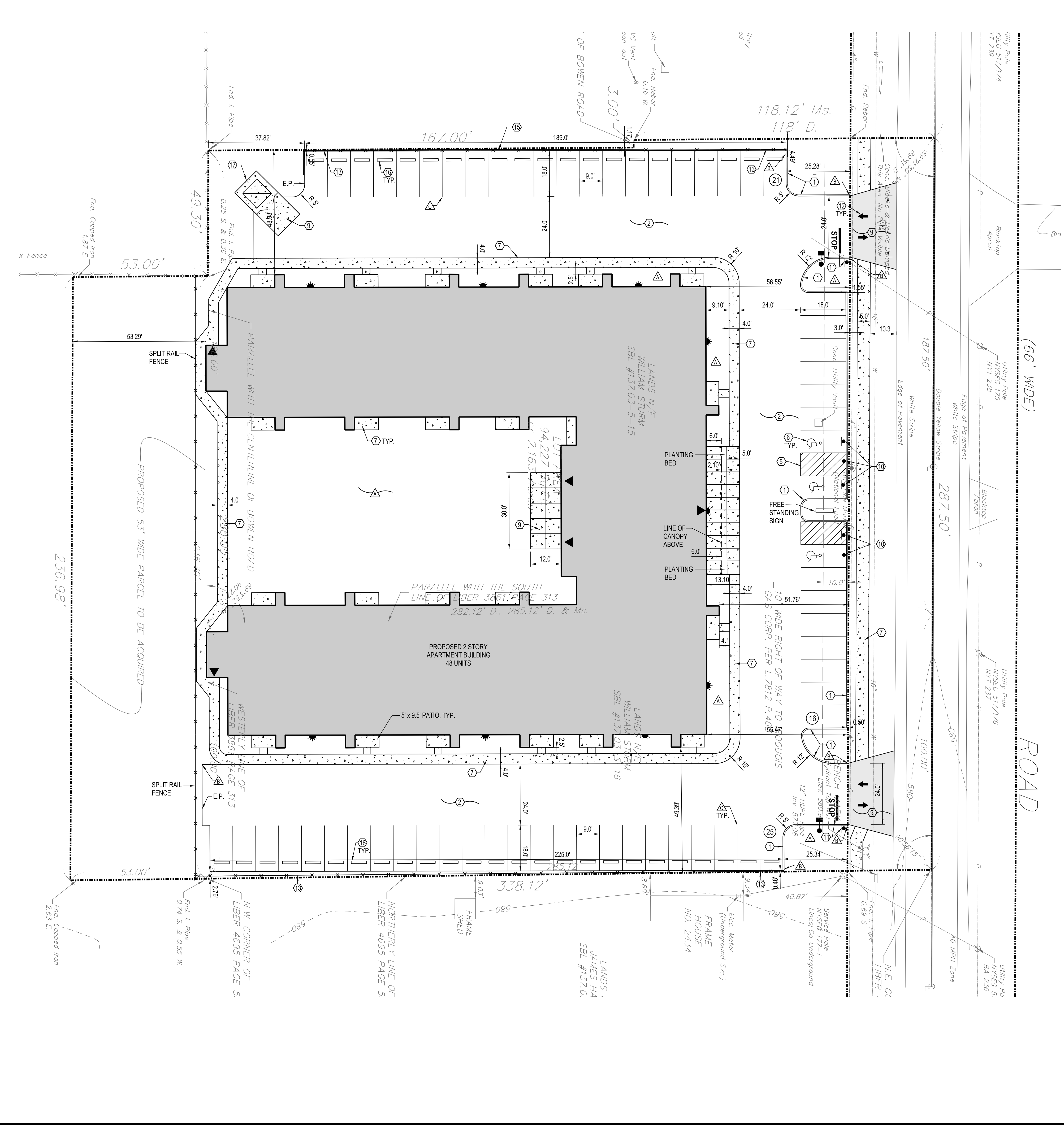
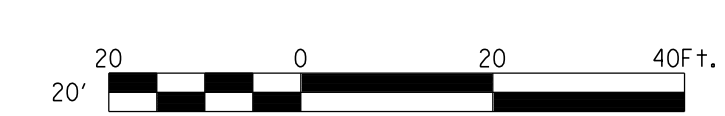
- ▲ 4" TOPSOIL & SEED IF NO PLANTINGS-SEE LANDSCAPING PLAN.
- ▲ RUN OUT CURB IN 4'-0"
- ▲ 4" WIDE PAINTED WHITE PAVEMENT STRIPES

DETAIL LEGEND

- ① CONCRETE CURB
- ② STANDARD DUTY ASPHALT
- ③ HANDICAP PAVEMENT RAMP
- ④ SIDEWALK CURB RAMP
- ⑤ HANDICAP PAVEMENT MARKINGS
- ⑥ INTERNATIONAL HANDICAP SYMBOL
- ⑦ CONCRETE SIDEWALK
- ⑧ NOT USED
- ⑨ EXTERIOR CONCRETE SLAB-ON-GRADE
- ⑩ HANDICAP OR "NO PARKING" SIGN
- ⑪ STOP BAR/STOP SIGN
- ⑫ PAINTED TRAFFIC ARROWS
- ⑬ BOARD-ON-BOARD FENCE
- ⑭ LIGHT POLE FOUNDATION
- ⑮ RETAINING WALL
- ⑯ PARKING BUMPER
- ⑰ DUMPSTER ENCLOSURE

SITE DATA

CURRENT ZONING: INTERMEDIATE COMMERCIAL (C-2)
ACREAGE: 2.163 ACRES
PARKING = 2 SPACES PER UNIT=96 REQUIRED, 62 PROVIDED
BUILDING FOOTPRINT = 23,550 S.F.
TOTAL FLOORSPACE = 47,056 S.F.
TOTAL GREENSPACE = 29%



SYLVIA'S PLACE
2460 BOWEN ROAD
ELMA, NEW YORK
YOUNG DEVELOPMENT, INC.

MARK	DATE	DESCRIPTION
6-23-11		REMOVE CURB

REVISIONS

PROJECT NO: J19.005.001
DATE: FEBRUARY 14, 2011
SCALE: 1"=20'
DRAWN BY: S. SCHIENER
DESIGNED BY: L. DEWEY
CHECKED BY:

NO ALTERATION PERMITTED HEREON EXCEPT AS PROVIDED UNDER SECTION 7209 SUBDIVISION 2 OF THE NEW YORK EDUCATION LAW

CIVIL

SITE PLAN

C-101